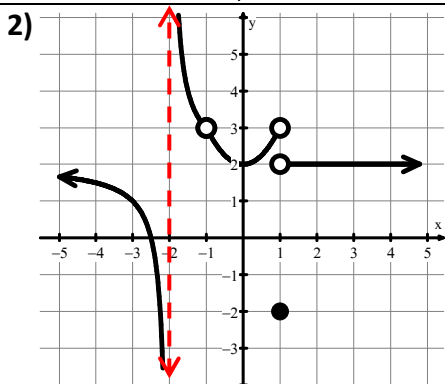
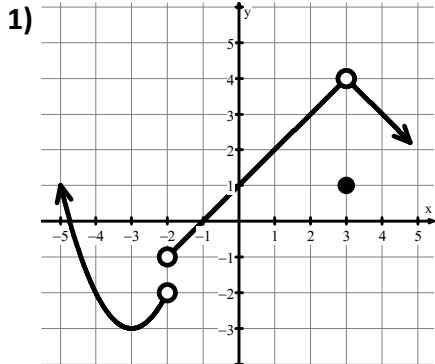


2.3 Corrective Assignment – Limits (Graphically)

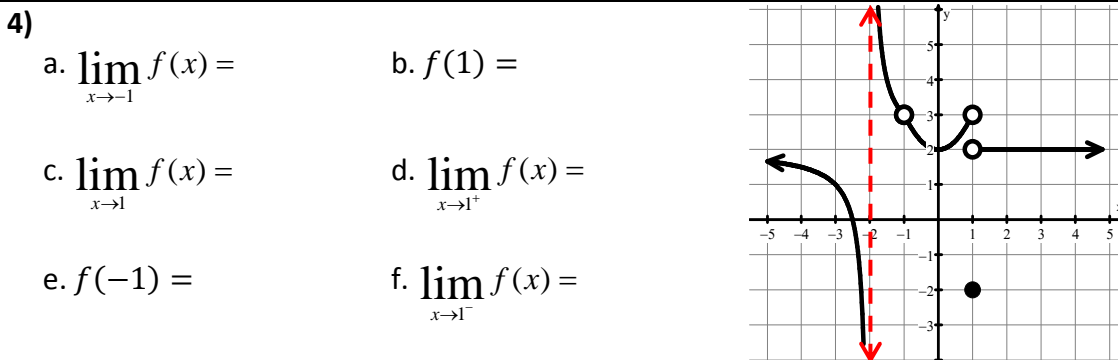
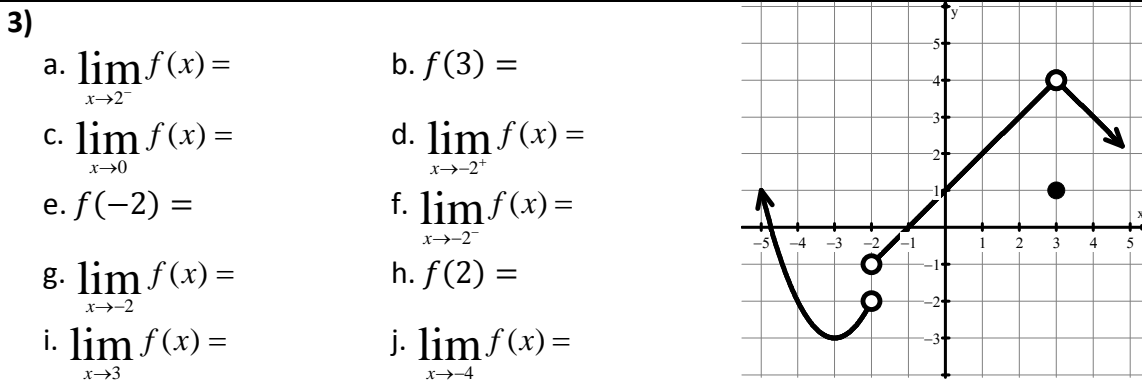
Name: _____

Pre-Calculus

For 1-2, identify the x -values of each discontinuity, and write if it is removable or not. If it is nonremovable then classify the type.



For 3-4, give the value of each statement. If the value does not exist, write "does not exist" or "undefined."



ANSWERS:

1) Nonremovable jump discontinuity at $x = -2$, removable discontinuity at $x = 3$.

2) Nonremovable infinite disc at $x = -2$, removable disc at $x = -1$, Nonremovable jump disc. $x = 1$

3) a. 3, b. 1, c. 1, d. -1, e. DNE, f. -2, g. DNE, h. 3, i. 4, j. -2

4) a. 3, b. -2, c. DNE, d. 2, e. DNE, f. 3